



FOR LEASE

Office or Medical Space Located Near Downtown Issaquah

Juniper Street Professional Center
710 NW Juniper Street
Issaquah, WA

Space Availability:
Suite 212
1,700 RSF

For more information contact:

425.462.2100

Kathryn Colgan

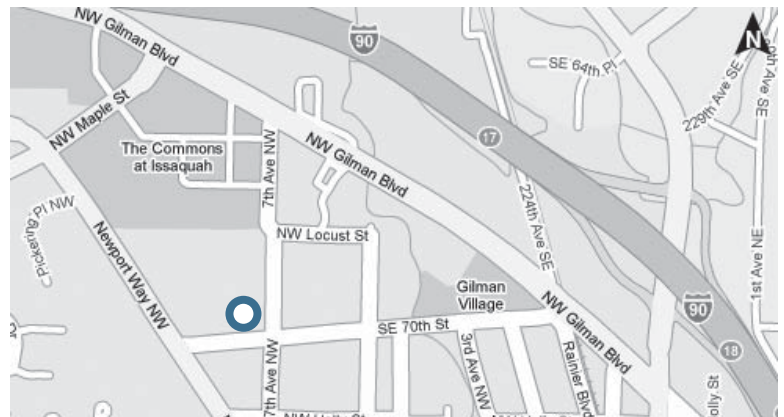
kathrync@unicoprop.com
206.399.5321 (mobile)

Ann Bishop

bishop@wallaceproperties.com
425.283.1658 (direct)

Features

- Suite 212: 1,700 RSF
- Sublease through April 14, 2012
- Rental rate: \$18.57/RSF NNN
- Open area and private offices on windowline
- Monument signage available
- On-site parking for employees and clients
- Excellent access to I-90 and Downtown Issaquah
- Close to Gilman Village, The Commons at Issaquah, Target, Costco and more

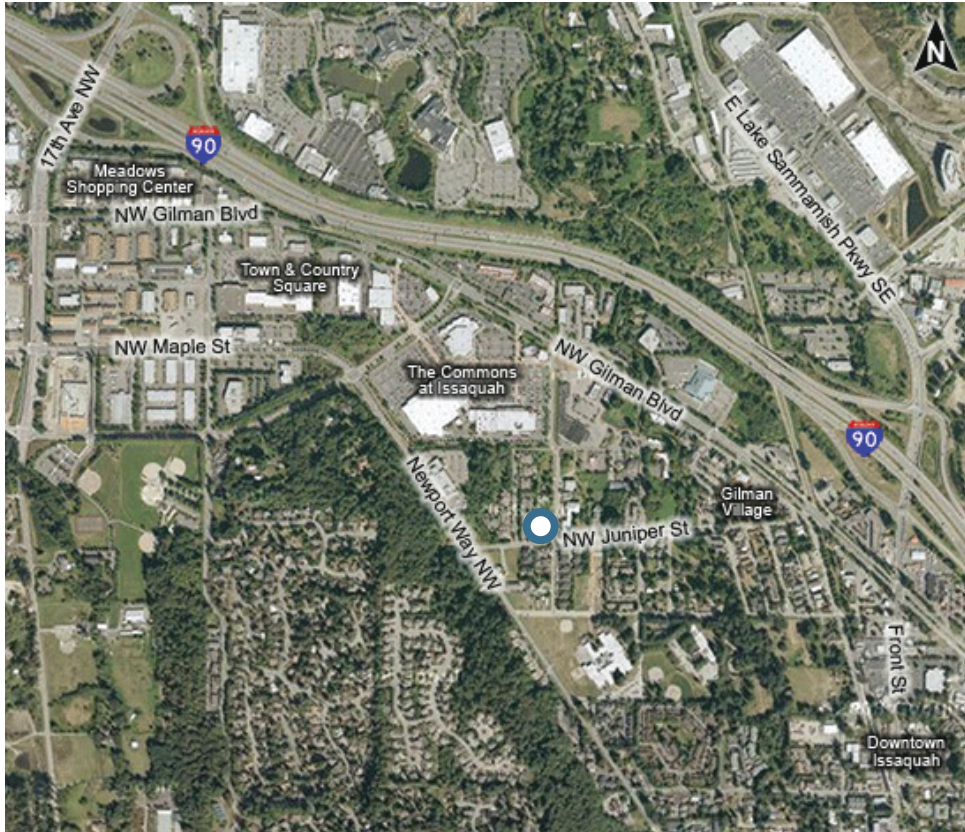


UNICO PROPERTIES LLC & WALLACE PROPERTIES, INC.

425.462.2100

www.unico-wallace.com





FOR LEASE

Office or Medical Space Located Near Downtown Issaquah

Juniper Street Professional Center
710 NW Juniper Street
Issaquah, WA

Space Availability:
Suite 212
1,700 RSF

For more information contact:

425.462.2100

Kathryn Colgan
kathrync@unicoprop.com
206.399.5321 (mobile)

Ann Bishop
bishop@wallaceproperties.com
425.283.1658 (direct)



	1 mile	3 mile	5 mile
2009 Population	6,568	37,932	94,510
2009 Households	2,942	14,773	34,283
2009 Average HHI	\$97,251	\$135,827	\$150,346